

E.M.H WORKSHOP

The society EMH Workshop is located in Casablanca, it operates in the sectors of :
Shipbuilding, Industry, Service and Trading

SHIPBUILDING



INDUSTRY



SERVICE



TRADING



THE SERVICE OPENING TIME IS 24/7

EMH WORKSHOP is competent in the following areas :

- The study and design
- Repair and maintenance of ships
- Inspection of ships rescue equipment
- The installation, maintenance in industrial and service
- The on-site machining with portable boring machine up to 400 mm
- The test in charge of lifting equipment :

We have developed methods and test equipment for performing load tests in hoists up to 100 T

- Trading



Support test for crane up to 90 T



Hinges bore onsite



Inspection of lifeboats

We work with specialized multifunctional teams :

- Mechanical
- Hydraulics / Pneumatics
- Electricity / Automation
- Boilerworks / Structure / Welding
- Piping
- Handling



Works on turbine

Major customers of EMH WORKSHOP are :

- ONEE (National Office of Electricity and Water Supply)
- The Hassan II Mosque Foundation
- BIMO / MONDELEZ (Biscuit Factory)
- SOSIPO (Society of Port Silo)
- SNTL (National Society of Transportation and Logistics)
- MARSA MAROC (Terminal Operations and Port Quays)
- PETROCAB (Moroccan Company in the Oil)
- DRAPOR (Port Dredging)
- OFFSHORE Maroc (Towing Company)
- SCRA (Company in Towing and Assistance)
- CMA CGM (Maritime Transport)

Repair and maintenance of ships :



Lift 70 T



Opening stem



Work on structures



Group and generator



*Mobile bridges
for loading cars*



Watertight door



*Mooring winch
and windlass*



*Hatch covers on
cargo ship*



Cylinder hatch



Front ramp



Installing a radio antenna



Pressure washer

Installation and maintenance in industrial and service :



*Installing pumping
stations*



Modification of hoists



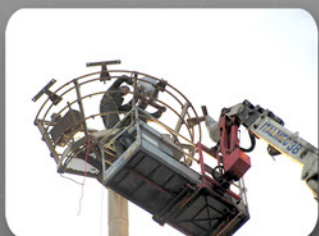
*Work on pipeline
(1500 mm)*



*Installation of
metal structures*



*Designing a
discharge carriage*



*Installation of
lighting pylon*



*Installation of marking
system for chimney*



*Maintenance of hydraulic
and mechanical installations*



*Repair and maintenance of
fire protection systems*

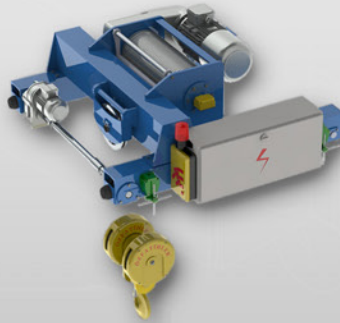


*Mounting mills in
the food industry*

EMH WORKSHOP is exclusive distributor of :



OZFATİHLER CRANE designs and manufactures hoists from 500 kg to 250 T :
overhead traveling cranes, gantry cranes, hoists, jib cranes ...



STRAIGHTPOINT is a leader in the design and manufacture of a wide range of
products for load control and weighing up to 1500 T :

Digital load cells, load shackles, load cells, pressure cells, telemetry system ...



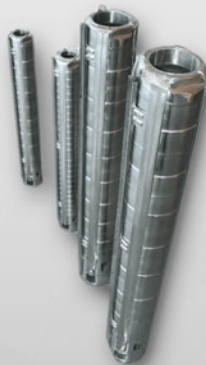
OILGEAR TOWLER designs and manufactures : piston pumps, valves, distributors,
complete electro hydraulic systems, hydraulic motors, manifolds, servo valves,
electronic modules ...



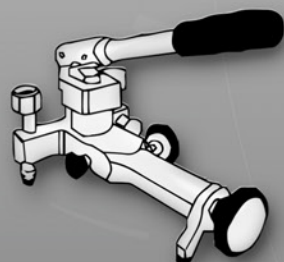
EMH WORKSHOP is exclusive distributor of :



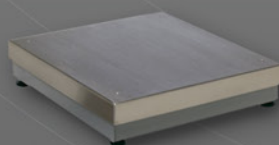
BRITEFIL designs and manufactures submersible pumps, vertical multistage and submersible motors ...

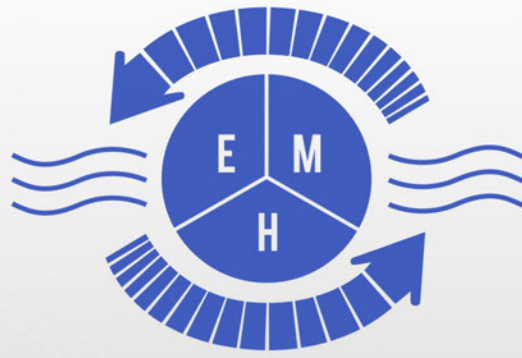


ATM Instruments is a specialist in the manufacture of measuring instruments and control : pressure gauges, thermometers, pressure switches, recorders, actuators, safety valves, ball valves, general fittings, filters, tubes and pipes, pressure taps ...



SPES is manufacturer of electronic weighing platform and balance up to 10 tons ...





EMH MAROC

**Boulevard Almohades
Shipyards Zone
Port of Casablanca**

Phone : +212 (0)5 22 44 91 48

Phone : +212 (0)5 22 45 18 06

Fax : +212 (0)5 22 54 22 62

Cel : +212 (0)6 61 33 92 11

Cel : +212 (0)6 62 84 72 81

agmaroc-contact@emhfrance.com

www.emhmaroc.com



Trade fair of Midest Maroc